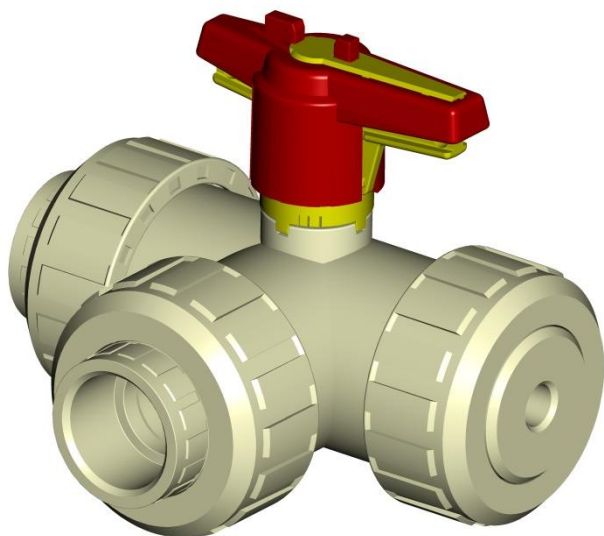


3-way ball valve S4 – hand operated

90° / 180° limited



General:

- Material: PP-H
PVC-U (on request)
- Seal materials: EPDM
- Ball seating joint: PTFE
- Dimensions: DN25 d32
DN40 d50
- With T-bore
- Suitable for potable water certification

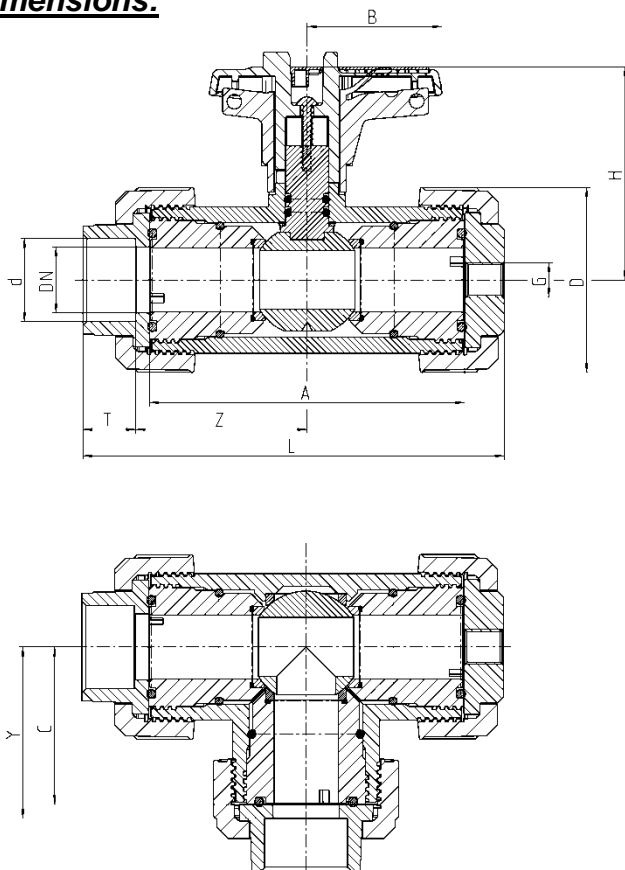
Connections:

- PP-fusion socket DIN
- optional threaded socket G 1/4"

Operating pressure: PN10

This document does not constitute a guarantee, it is for initial information purposes only. The product range is continually upgraded, the designs and types therefore only reflect the state of the art at the time of printing. Subject to technical modifications!

Dimensions:



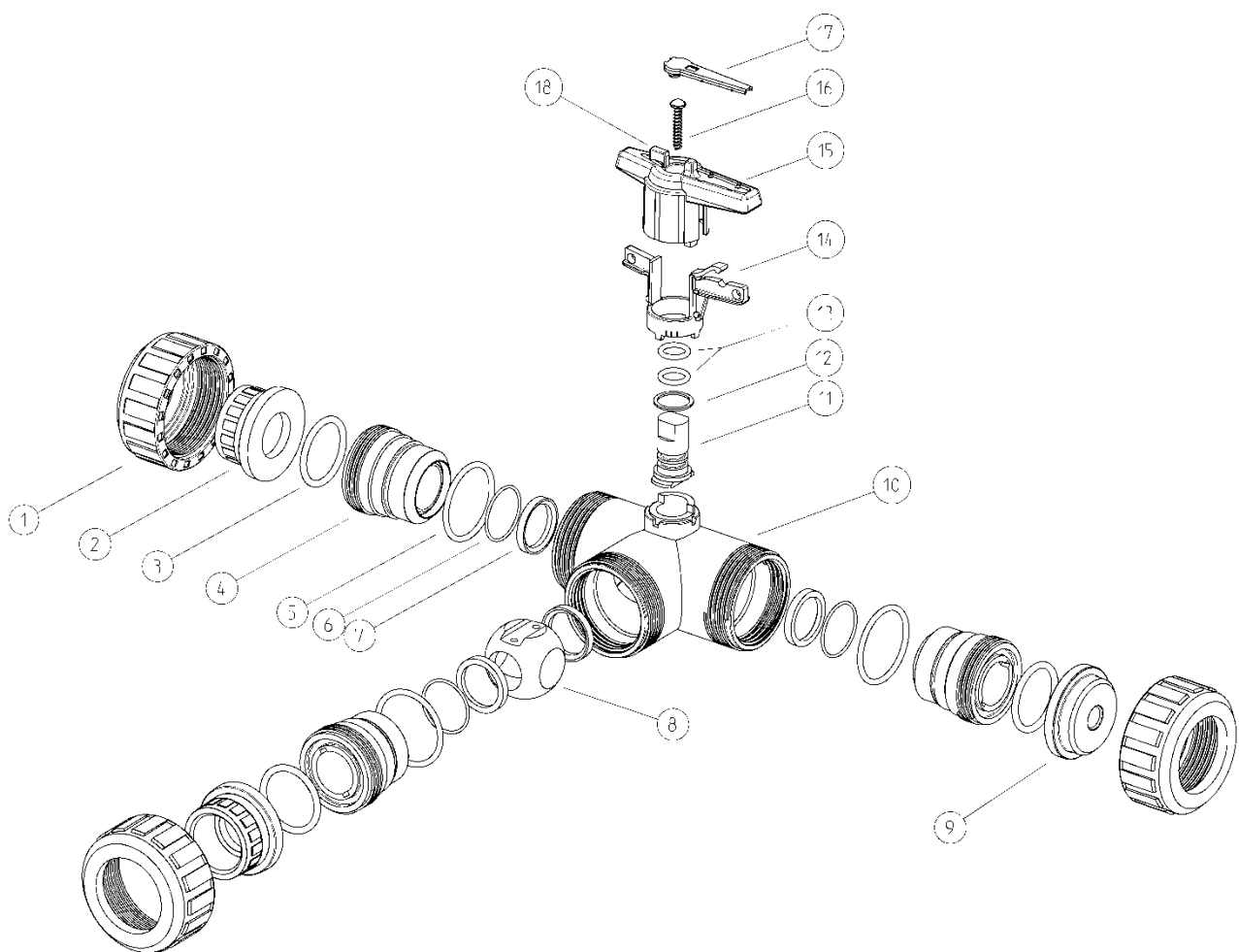
d	32	50
DN	25	40
G	1/4"	1/4"
A	119,5	161
B	51,5	73
C	59,5	80,5
D	70	101
H	80,5	106,5
L	159,5	216
T	19,5	25,5
Y	65	90,5
Z	65	90,5
PN	10	10

3-way ball valve S4 – hand operated

90° / 180° limited

Exploded drawing:

- | | | | |
|----|--------------------|-----|------------------------------------|
| 1. | Union nut | 10. | Body 90° or 180° |
| 2. | Fusion socket | 11. | Shaft |
| 3. | O-Ring | 12. | Disc |
| 4. | Thrust collar | 13. | O-Ring |
| 5. | O-Ring | 14. | Spring loaded locking sleeve |
| 6. | O-Ring | 15. | Handle |
| 7. | Ball seating joint | 16. | Fillister head sheet metal screw |
| 8. | ball | 17. | Labeling plate |
| 9. | threaded socket | 18. | Plug for opening the thrust collar |

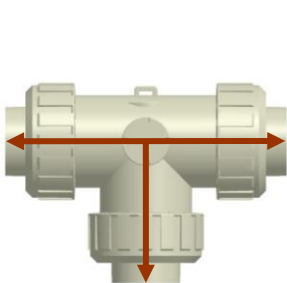


3-way ball valve S4 – hand operated

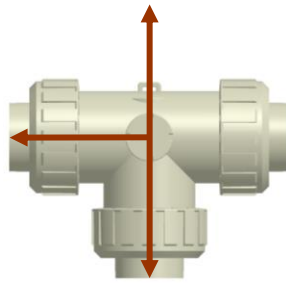
90° / 180° limited

Positions

3W ball valve „T“ 90° limited

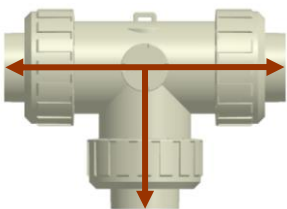


Position 1

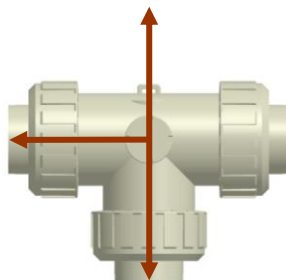


Position 2

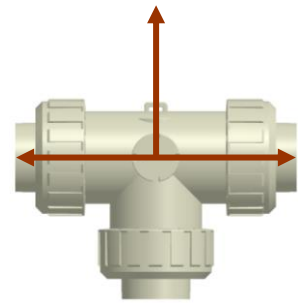
3W ball valve „T“ 180° limited



Position 1



Position 2



Position 3

Diagrams Pressure-temperatur, Pressure loss and kv value table see datasheet 3W ball valve S4 hand operated